



# Flight Plan & Site Survey

Created using **RPAS Wilco®**

Operation Name:	btighton rc hawks
Pilot Name:	██████████
Pilot Certificate:	██████████
Flight Start:	February 14, 2023 3:04 PM
Flight End:	February 14, 2023 5:04 PM
Flight Area (Latitude):	44° 2' 16.50" N ( 44.038 )
Flight Area (Longitude):	77° 43' 10.40" W ( -77.72 )
Altitude - Radius:	Alt: 700 ft - Rad: 926.0 m ( 0.5 nm)
Airspace:	CONTROLLED
FIR - Contact:	CZYZ - 905-676-4509
Weather:	1.7 Celsius - Partially cloudy

Please ensure you received all required authorizations prior to flight.

## Disclaimer

This Site Survey was created using RPAS Wilco by AIM Robotics. The flight plan contained is intended only for RPAS flights on the date/time and location specified. The user accepts all responsibility for the accuracy and completeness of the information contained.

For the complete Terms & Conditions, see

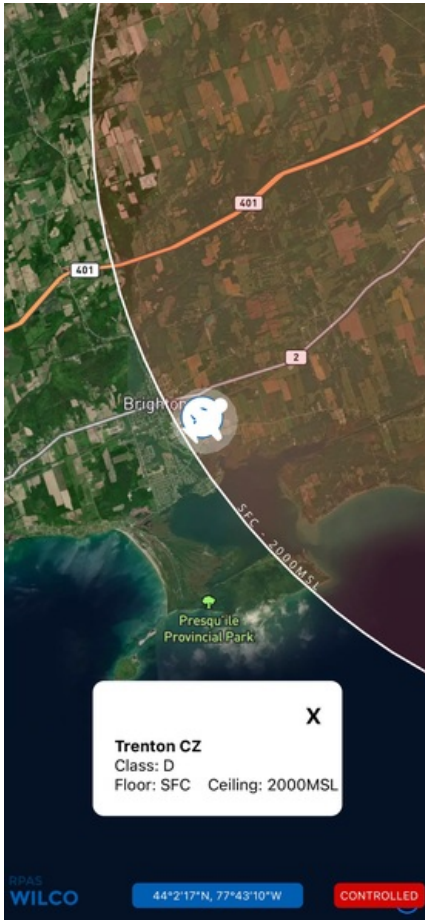
<https://rpaswilco.com/#/tnc>

## Included



- Site Survey
- Obstacles (if available)
- Nearby Aerodromes
- Canadian Aviation Regulations
- GFA
- Aerodrome Supplements
  - METAR & TAF (if available)
  - NOTAMs
  - CFS



## Flight Map



## MAP Details

	Latitude	Longitude
 <b>MODEL</b>	44° 2' 16.50" N ( 44.038 )	77° 43' 10.40" W ( -77.72 )
 <b>Pilot</b>	44° 2' 20.10" N ( 44.0389 )	77° 43' 14.00" W ( -77.7206 )



## Airspace Classification



## Overlying Airspaces

Class	Name	Floor	Ceiling
D	Trenton CZ	SFC	2000MSL
D	Trenton CZ	2000MSL	6000MSL
B	Southern Ontario Low Level Control Area CAE	17000MSL	18000MSL
E	Trenton, ON TCA	700AGL	17000MSL
E	Trenton, ON TCA	700AGL	12500MSL
B	Trenton, ON TCA	12500MSL	17000MSL

## Nearest Aerodromes & Distance from Operation

TRENTON (CYTR AERODROME DND)	Lat: 44.119	Long: 77.528	17.76 KM	9.59 NM
AERY (CRA3 AERODROME Reg)	Lat: 44.105	Long: 77.459	22.112 KM	11.94 NM
STIRLING (CPJ5 AERODROME Reg)	Lat: 44.241	Long: 77.562	25.846 KM	13.96 NM
MOUNTAIN VIEW (CPZ3 AERODROME DND)	Lat: 44.07	Long: 77.339	30.62 KM	16.53 NM

## Weather Information for Mission Day

Summary: Partly cloudy throughout the day.

Condition	Temperature	Feels Like	Precipitation	Visibility	Cloud Coverage	Wind Speed	Humidity
Partially cloudy	1.7 Celsius	0.9 Celsius	0.0 %	19.6 Km	29.0 %	13.5 kph	82.6 %

# Canadian Aviation Regulations

## Division III — General Operating and Flight Rules

For full listing please visit <https://laws-lois.justice.gc.ca/eng/regulations/SOR-96-433/FullText.html#s-901.27>

### Visual Line-of-sight

- **901.11 (1)** Subject to subsection (2) no pilot shall operate a remotely piloted aircraft system unless the pilot or a visual observer has the aircraft in visual line-of-sight at all times during flight.
- **(2)** A pilot may operate a remotely piloted aircraft system without the pilot or a visual observer having the aircraft in visual line-of-sight if the operation is conducted in accordance with a special flight operations certificate — RPAS issued under section 903.03.

### Procedures

- **901.23 (1)** No pilot shall operate a remotely piloted aircraft system unless the following procedures are established:
  - **(a)** normal operating procedures, including pre-flight, take-off, launch, approach, landing and recovery procedures; and
  - **(b)** emergency procedures, including with respect to
    - **(i)** a control station failure,
    - **(ii)** an equipment failure,
    - **(iii)** a failure of the remotely piloted aircraft,
    - **(iv)** a loss of the command and control link,
    - **(v)** a fly-away, and
    - **(vi)** flight termination.
- **(2)** If the manufacturer of the remotely piloted aircraft system provides instructions with respect to the topics referred to in paragraphs (1)(a) and (b), the procedures established under subsection (1) shall reflect those instructions.
- **(3)** No pilot shall conduct the take-off or launch of a remotely piloted aircraft unless the procedures referred to in subsection (1) are reviewed before the flight by, and are immediately available to, each crew member.
- **(4)** No pilot shall operate a remotely piloted aircraft system unless the operation is conducted in accordance with the procedures referred to in subsection (1).

### Site Survey

**901.27** No pilot shall operate a remotely piloted aircraft system unless, before commencing operations, they determine that the site for take-off, launch, landing or recovery is suitable for the proposed operation by conducting a site survey that takes into account the following factors:

- **(a)** the boundaries of the area of operation;
- **(b)** the type of airspace and the applicable regulatory requirements;
- **(c)** the altitudes and routes to be used on the approach to and departure from the area of operation;
- **(d)** the proximity of manned aircraft operations;
- **(e)** the proximity of aerodromes, airports and heliports;
- **(f)** the location and height of obstacles, including wires, masts, buildings, cell phone towers and wind turbines;
- **(g)** the predominant weather and environmental conditions for the area of operation; and
- **(h)** the horizontal distances from persons not involved in the operation.

### Operations at or in the Vicinity of an Aerodrome, Airport or Heliport

- **901.47 (1)** No pilot shall operate a remotely piloted aircraft at or near an aerodrome that is listed in the *Canada Flight Supplement* or the *Water Aerodrome Supplement* in a manner that could interfere with an aircraft operating in the established traffic pattern.
- **(2)** Subject to section 901.73 no pilot shall operate a remotely piloted aircraft at a distance of less than
  - **(a)** three nautical miles from the centre of an airport; and
  - **(b)** one nautical mile from the centre of a heliport.
- **(3)** No pilot shall operate a remotely piloted aircraft at a distance of less than three nautical miles from the centre of an aerodrome operated under the authority of the Minister of National Defence unless the operation is conducted in accordance with a special flight operations certificate — RPAS issued under section 903.03.

### Records

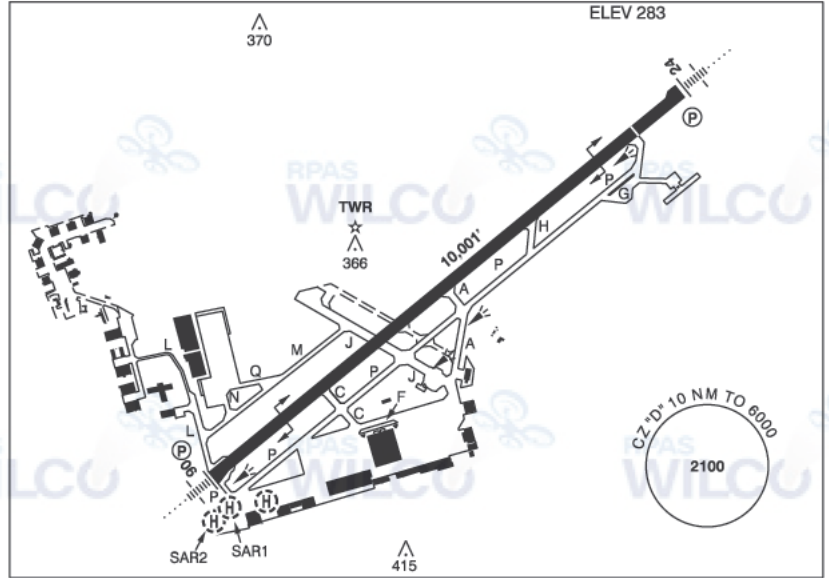
- **901.48 (1)** Every owner of a remotely piloted aircraft system shall keep the following records:
  - **(a)** a record containing the names of the pilots and other crew members who are involved in each flight and, in respect of the system, the time of each flight or series of flights and
  - **(b)** a record containing the particulars of any mandatory action and any other maintenance action, modification or repair performed on the system, including
    - **(i)** the names of the persons who performed them,
    - **(ii)** the dates they were undertaken,
    - **(iii)** in the case of a modification, the manufacturer, model and a description of the part or equipment installed to modify the system, and
    - **(iv)** if applicable any instructions provided to complete the work.
- **(2)** Every owner of a remotely piloted aircraft system shall ensure that the records referred to in subsection (1) are made available to the Minister on request and are retained for a period of
  - **(a)** in the case of the records referred to in paragraph (1)(a), 12 months after the day on which they are created; and
  - **(b)** in the case of the records referred to in paragraph (1)(b), 24 months after the day on which they are created.
- **(3)** Every owner of a remotely piloted aircraft system who transfers ownership of the system to another person shall, at the time of transfer, also deliver to that person all of the records referred to in paragraph (1)(b).

ONTARIO

AERODROME/FACILITY DIRECTORY

TRENTON ON

CYTR



REF	N44 07 09 W77 31 42 2.3NE 12°W (2022) UTC-5(4) Elev 283' A5000 LO6 LO7 HI5 CAP
OPR	DND. All flts require PPR. Req PPR at least 2 business days prior to arr exc emerg or MEDEVAC. Ldg & hdlg fees. Call Wing Ops for PPR processing 613-965-3316.
PF	B-1 D-2,3,5
CUST	Flts arr fm outside CDA: orig ETA provided in PPR may not guarantee CBSA will meet acft on arr. Acft must update ETA with 8 Wg Duty Ops min 2 hrs prior to orig ETA to ensure Customs upon arr. Failure to update ETA may result in 2 hr wait for CBSA agents.
FLT PLN	<div>FIC</div> London 866-WXBRIEF (Toll free within Canada) or 866-541-4104 (Toll free within Canada & USA) (Note: Wg Ops/ATC will not accept telephone/air filing) <div>WX</div> Met brief for mil only. Lcl Met Section CSN 827-2761 ltd hrs. O/T JMC 1-800-WXMETEO (996-3836) or CSN 432-2613. (See COMM). METAR 24H. TAF H24, issue times: 00, 06, 12, & 18Z.
SERVICES	No civ or foreign mil arr/dep without PPR exc emerg or MEDEVAC btwn 23-07 lcl time, etc W Ops Duty Watch. No civil svcg. Mil acft: Tran svcg ltd to prkg refuelling & starts. Trans aircrew rqrd to carry out own DI & supervise svcg, fuelling & pin install. Arr with max PI valid. <div>FUEL</div> F-34, SP <div>OIL</div> 123, 128, 133, 148, 156, SOAP <div>ARFF</div> CAT 8 <div>SUP FL</div> D & A-ice, LHOX, LOX <div>JASU</div> CE1, 6, 8, 12, 13, 15, 16, CA1, 3, CEA1 <div>MIL ADV</div> Wings Ops 122.35 or 268 0 Inbd mil acft advise ramp time & requirements at least 20 min prior to ldg.



## ONTARIO

## AERODROME/FACILITY DIRECTORY

## TRENTON ON (Cont'd)

CYTR

<b>RWY DATA</b>	Rwy 06(062°)/24(242°) 10,001x200 ASPH Thld 24 displ 1000'. RAG: Rwy 06 BAK 12/14 smart arrest retractable arrestor system (1500'); Rwy 24 BAK 12/14 smart arrest retractable arrestor system (1676')
<b>RCR</b>	Opr CRFI S100, T200, ST248, TT400. Rwy 24 PCN for 1000' displ thld 68/R/A/X/U PCN for remainder of rwy 06/24 85/F/C/X/U.
<b>LIGHTING</b>	Rwy 06/24 overt/covert AMP3 lgt avbl on req. 06-AN (TE HI) P2 GPI 992' TCH 52', 24-AN (TE HI) P2 GPI 986' TCH 51'
<b>COMM</b>	Flight Advisory hrs of operation dates & hrs may vary and will be broadcasted on ATIS.
<b>ATIS</b>	135.45 257.7
<b>CLNC DEL</b>	124.35 286.4 all itinerant IFR dep acft to ctc clnc del prior to engine start if able
<b>GND</b>	121.9 275.8
<b>TWR</b>	128.7 236.6 (E)
<b>TML</b>	128.4 324.3
<b>MIL</b>	H24. Inbd acft call Wg Ops 122.35 or 268.0, 20 min out with load & svc data. Obd acft call prior to engine start. Tiger (SAR) Ops 232.1 opr 13-2130Z†
<b>PMSV</b>	344.6 ltd hrs.
<b>NAV</b>	
<b>NDB</b>	YTR 215 (L) N44 11 37 W77 24 12 SEVERN ZZR 317 (L) N44 03 10 W77 37 36 Preventive maint 1st Tues of month 13-17Z†
<b>TACAN</b>	UTR 109.7 Ch 34 N44 07 16 W77 31 44 (285') Preventive maint every Thu of month 13-17Z†
<b>ILS</b>	INT 110.75 (Rwy 06) RVR ITR 109.7 (Rwy 24) RVR Preventive maint first Wed of ev month 13-17Z†
<b>PRO</b>	Visiting aircrew report to Wg Ops. Pilots must contact Wg Ops on MIL 268 0 or 122.35, prior to contacting GND for start clnc. Rgt hand circuits Rwy 06 (CAR 602.96). Tfc ptn; convl 1500 ASL, Jet 2000 ASL overhead breaks to the south for all rwys, max 300 kt at initial located on the rwy extended centreline at 3-5NM or as directed by ATC. Extensive paradrop and glider activity at Trenton and Mountain View (CPZ3) to 3500 ASL, ocsl to 12,500 ASL. Increased mil tfc within 35NM of CYTR. Pilots are advised to listen to CYTR ATIS prior to contacting CYTR Twr for entry into the CZ. All VFR acft & IFR acft in VMC cond on overshoot, missed approach, or dep shall not exceed 1500 ASL until dep end of rwy. PSR & SSR preventive maint each Mon 23-06Z† dur VFR. Mon hol alternate Tue.
<b>HELI</b>	VFR, arr/dep req Whiskey or Echo rtes. See VTPC. Whiskey - Remain S of Twys F & P. Echo - Direct Twy G remain S of Rwy 06/24. Dep maintain 500 AGL within 5NM apt or as cleared by ATC. Arr maintain 500 AGL within 1NM apt
	De-icing: All aircrew to arrange de-icing through Wg Ops. All de-icing will normally be performed on the de-icing pad on Juliet taxiway located at N44 06.9 W077 31.7. The de-icing pad can be entered via Alpha and/or Papa taxiway. Aircrew to contact ICEMAN on 130.775 prior to entering the de-icing pad. Acft to follow taxi line (taxi line offset to west) to marked yellow square and stop with the nose wheel on the spot as directed by ICEMAN, configure the aircraft for spraying, set PARK BRAKE. Do not exit acft at the de-icing pad. Before contacting ground control for taxi clearance, aircrew shall confirm with ICEMAN that men and equipment are clear of danger area.

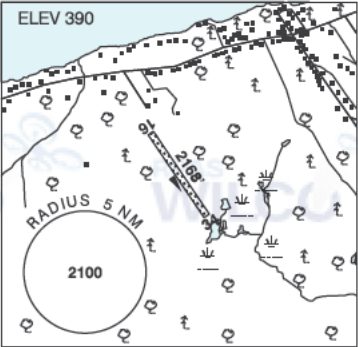
ONTARIO

AERODROME/FACILITY DIRECTORY

REDNERSVILLE / AERY ON

CRA3

REF	N44 06 19 W77 27 34 Adj SW 12°W (2020) UTC-5(4) Elev 390' A5000
OPR	Don Patrick 905-261-6615 Reg PPR
PF	C-1,2,3,4,5,6
FLT PLN	FIC London 866-WXBRIEF (Toll free within Canada) or 866-541-4104 (Toll free within Canada & USA)
RWY DATA	
RCR	Rwy 16(158°)/34(338°) 2168x70 turf Opr No win maint. Rwy soft in spring.
COMM	TWR Trenton 128.7
TWR	
PRO	A/D is in CFB Trenton Class D CZ. Advs Trenton TWR prior to entering CZ on arr or dep. Call Trenton TWR by phone 30 min prior to planned dep and ctc TWR on 128.7 prior to tkof. All NORDO flts must ctc Trenton TWR via altn means prior to entering CZ on arr or dep. Trenton TWR 613-965-3788 will accept collect calls.
CAUTION	Extv paradrop & glider activity at Trenton (3NM WNW) & Mountain View (5.6NM SE) to 3500 ASL, ocsI to 12,500 ASL. Timing and alt will be bcst on Trenton ATIS 135.45. Extv mil tfc within 35NM of Trenton.



## ONTARIO

## AERODROME/FACILITY DIRECTORY

## STIRLING ON

CPJ5

<b>REF</b>	N44 14 29 W77 33 42 3.5SSW 12°W UTC-5(4) Elev 625' A5000	
<b>OPR</b>	Oak Hills Flying Club 613-395-2360 Reg	
<b>PF</b>	C-1,2,3,5 D-2,3,4,5,6	
<b>FLT PLN</b>		
<b>FIC</b>	London 866-WXBRIEF (Toll free within Canada) or 866-541-4104 (Toll free within Canada & USA)	
<b>SERVICES</b>		
<b>FUEL</b>	100LL PN	
<b>S</b>	4,5	
<b>RWY DATA</b>	Rwy 09/27 2350x125 turf/asphalt Rwy 27 first 1000x50 ASPH, remainder 1350x125 turf Thld 27 displ 1000' Thld 09 displ 200	
<b>RCR</b>	Opr Ltd win maint	
<b>LIGHTING</b>	09-(TE LO) non-std, 27-(TE LO) non-std ARCAL-122.8 type J	
<b>COMM</b>		
<b>RCO</b>	London rdo (Campbellford) 123.375 (FISE) 126.7 (bcst)	
<b>TWR</b>	Trenton 128.7	
<b>ATF</b>	UNICOM ltd hrs O/T tfc 122.8 5NM 3600 ASL	
<b>PRO</b>	ATF airspace is entirely within CFB Trenton Class D CZ. Advise Trenton TWR prior to entering CZ on arrival or departure. All NORDO flts must ctc Trenton TWR via alternate means prior to entering CZ on arrival or departure. Trenton TWR phone number (613) 965-3788. TWR will accept collect calls.	
<b>CAUTION</b>	Trees east of thld Rwy 27, 60 AGL. Downdrafts on Rwy 09 associated with E winds, downdrafts on Rwy 27 associated with W winds. Wildlife may be on rwy. Pvt A/D adj S.	

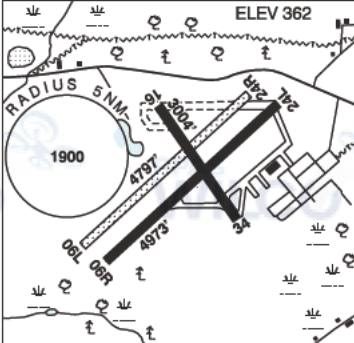


## ONTARIO

## AERODROME/FACILITY DIRECTORY

## TRENTON / MOUNTAIN VIEW ON

CPZ3

REF	N44 04 12 W77 20 22 5 2SE 12°W (2022) UTC-5(4) Elev 362' A5000 LO6 LO7 HI5	
OPR	DND All users 24 hr PPR through Trenton Ops 613-965-3316, CSN 319-827-3316 Fax 613-965-7093. Regardless of PPR all users check in with Wg Ops via phone or radio 122.35, 268.0 prior to using Mountain View apt.	
PF	B-1 D-2,3,5	
FLT PLN	<b>FIC</b> London 866-WXBRIEF (Toll free within Canada) or 866-541-4104 (Toll free within Canada & USA) (Note: Wg Ops/ATC will not accept telephone/air filing).	
SERVICES	<b>MIL ADV</b> Trenton 268.0 or 122.35 20 min prior to ldg	
RWY DATA	Rwy 06R(059°)/24L(239°) 4973x90 ASPH usable (with unstressed 15ft asphalt either side) Rwy 06L(060°)/24R(240°) 4797X60 GRVL Rwy 16(158°)/34(338°) 3004X150 crushed CONC/ASPH	
	<b>RCR</b> Opr Rwy 06R/24L TT585, PCN 86/F/A/X/T. Ltd sked win maint. Rwy 16/34 - sfc rough, no maint, use with caution	
LIGHTING	Rwy 06R/24L, 06L/24R AMP3 marker panels avbl. Overt/covert AMP3 lgt avbl Rwy 06R/24L ARCAL 122.925 and Rwy 06L/24R ARCAL 123.3, both type J; overt lgt avbl min 3 days PNR; overt lgt avbl min 3 days PNR	
COMM	<b>ATF</b> tfc 122.925 4NM 2500 ASL Area underlies the SE quadrant of the CYTR Mil CZ. Acft to contact Trenton Twr on 128.7 prior to entering the Mountain View ATF area.	
PRO	Rwy 06R/24L Medium and Heavy acft shall only turn around on the first 300ft of each end of the rwy. Acft on apch for Rwy 24L & 24R must maintain 3° GP due to hwy, if less than 3° initiate go around before overflight of hwy exc Gliders and low acft. Increased mil tfc within 35NM of CYTR. Pilots are advised to listen to CYTR ATIS (135.45) prior to contacting CYTR Twr for entry into ATF area. Extensive paradrop & glider activity at Trenton (CYTR) & Mountain View to 3500 ASL, ocsf to 12,500 ASL. Timing and alt will be bcst on ATIS. Non-std circuit pro for mil acft. All users external to 8 Wing intending to conduct training at Mountain View must request permission and a procedures briefing. Request permission from 8 Wing Ops at 613-392-2811 ext 4560/2559/2766 a minimum of 24 hours in advance.	
CAUTION	Possible NORDO vehicles on rwy/twy, verify rwy unobstructed prior to ldg.	